

FLEXIRA

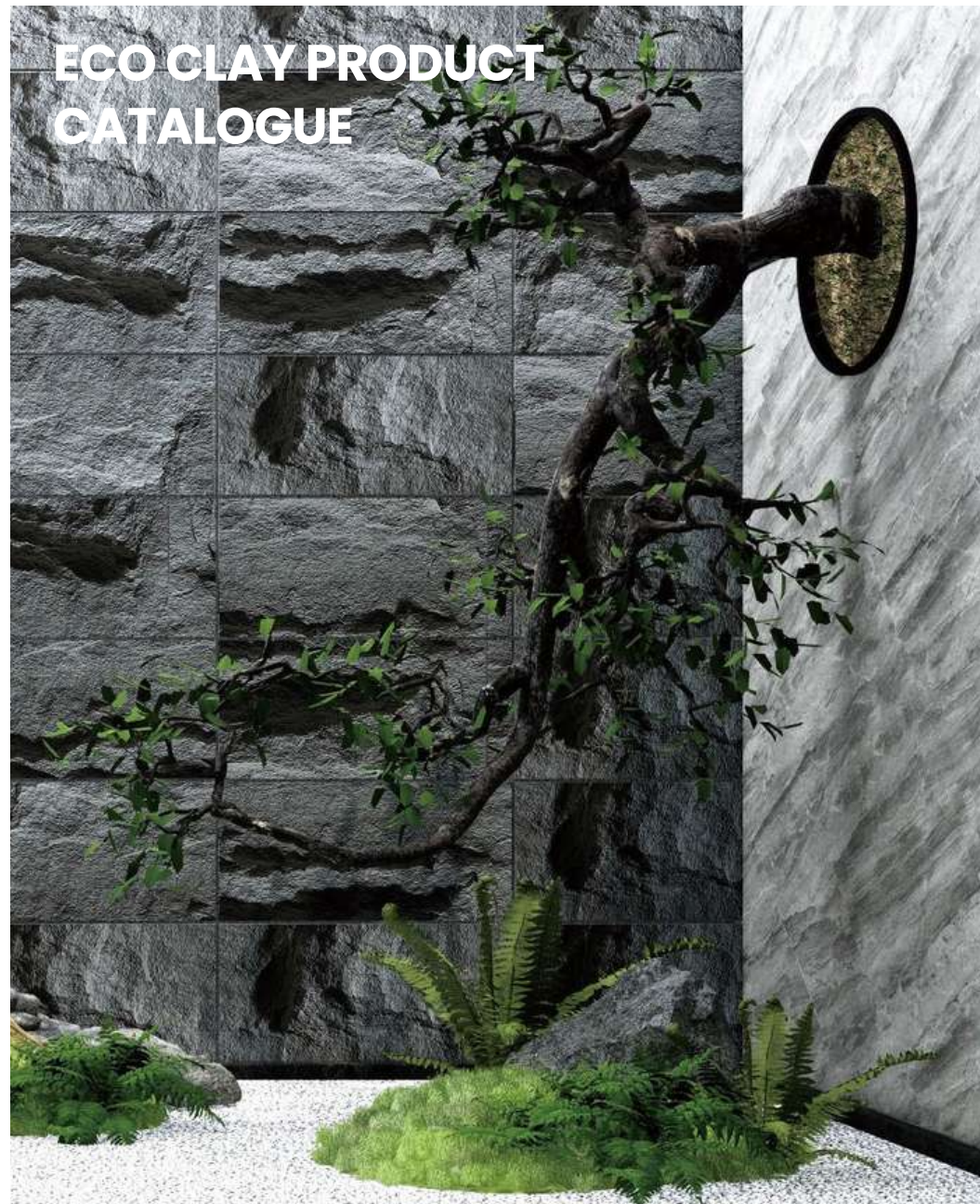
CERAMIQUE

ECO SOFT CLAY MCM

PRODUCT CATALOGUE



Flexira Tiles by **CERAMIQUE**
Quality design Land of Great Ceramic & Tiles



ECO CLAY PRODUCT CATALOGUE

PRODUCT OVERVIEW



1 Raw materials collection
Gathers natural inorganic materials, including clay, stone dust, reactive mineral powders, and volcanic ash.



2 Raw material management
Inorganic materials are coloured, crushed and processed into small amounts of inorganic powders at a microscopic level.



3 Composite Modified
Using our core patented technology, we utilise specific active groups to modify the particle surface compound, creating eco-friendly activated soil.



4 Production modelling
Enter the self-developed fully automated production line modelling.



5 Performance Tuning
The flexibility and firmness of the final product can be adjusted by controlling the temperature of the curve and applying a modifier.



6 Sheet moulding
Forming sheets, coils, blocks plates or profiles.



7 Return to cultivated land
It can be crushed and returned to ploughing soil without causing harm, exemplifying the concept of sustainable, recyclable and low-carbon development.



TECHNICAL CHARACTERISTICS



Resistant to ageing and salt spray

Resistance to accelerated aging test of 2000 (h) or more, equivalent to 30 years outdoors; in the coastal high salt spray environment can also be long-lasting.



Resistance to freezing and melting

Freeze-thaw test up to 15 times, the surface without powder, no cracks, no peeling can be used in extremely cold places.



Thin and lightweight

The material is lightweight at only 3-6kg per square metre with an average thickness of 2.5-4mm, resulting in time, energy, and space savings. Additionally, construction is convenient.



High temperature

The fire rating meets the standard of China A2 level flame retardant and EU A2 level flame retardant. Additionally, it provides some heat-insulating and reflective properties while maintaining safe performance.



Antistatic

Physical properties are stable and neutral, and do not actively absorb dust or fear haze and dust. They can be self-cleaned by rain wash as before, without any concern for dirt accumulation.



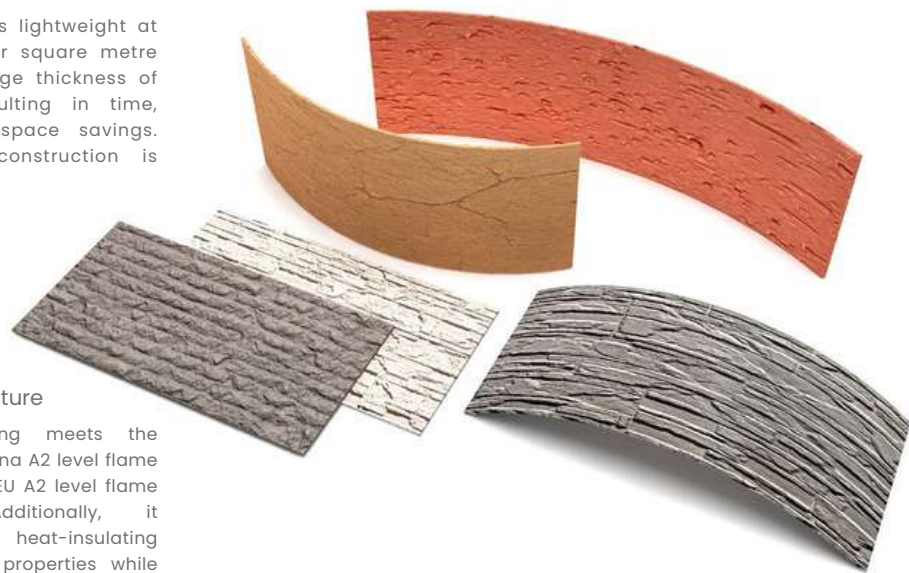
Moisture management

Lightweight and breathable, it absorbs moisture in humid indoor environments and releases it in dry environments, ensuring you remain dry and comfortable even on "return days".



Flexible customization

Soft texture, bendable, and ductile materials deliver superior performance with anti-seismic and anti-cracking properties.



PRODUCT ADVANTAGE

1. These new environmentally friendly materials are made from natural resources, can be recycled, and will not emit harmful substances into the environment. They are versatile and can be used with a range of materials and products.

3. sound-absorbing function, adsorption of odour decomposition of formaldehyde and other superimposed functions, later development can do inkjet superimposed.

5. These three renovation projects are particularly suitable, easy to operate, and offer convenient construction, shorter construction periods, and low costs.

7. It can serve as a replacement for alternative materials utilized for constructing interior walls.

2. With its moisture-proof and humidity-proof function, this product is designed to regulate indoor humidity levels. It is ideal for use in unique settings and environments where specific requirements are necessary.

4. Good flexibility, not easy to crack in the impact resistance test.

6. Paving plasticity, bending can be shaped, compared to the tile plane class, can do three-dimensional sculpture class products, with differentiation.

8. Small MOQ, short production cycle, not easily affected by the number of scheduling delivery.



ECO SOFT CLEY (MCM) vs Other decoration materials

type	MCM	emulsion paint	shakespeare	diatomaceous earth	bamboo fibre integrated wall panel	solid wood siding	soft pack background wall
deodorisation	long-lasting decomposition of formaldehyde	no such function	no such function	some brands are available and require UV excitation	no such function	no such function	no such function
anti-bacterial and anti-mould	anti-bacterial	no such function	no such function	some of the brands have	no such function	no such function	no such function
temperature control	excellent	average	average	excellent	average	medium	average
air permeability	excellent	average	average	excellent	average	excellent	average

3D MARBLE SERIES

Realistically reproduced natural stone with concave and convex textures, delicate layers of texture, and a 3D effect visible to the naked eye.



3D MARBLE

SERIES OF ECO CLAY

VENUS WHITE MARBLE

PERFORMANCE

It combines beauty and grandeur, with elegant textures and noble and elegant temperament, which can add a charming charm to the space.

MODLE

FLX-090

SIZE

600×1200×2.5(±1)mm

MATT





3D MARBLE

SERIES OF ECO CLAY

VENUS YELLOW MARBLE

PERFORMANCE

With irregular texture and color changes, the stripes resemble the shape of tree rings, adding a natural and graceful feel to the entire space.

SIZE

600×1200×2.5(±1)mm

MATT



Lightweight High temperature Anti-Age Antifreeze Anti-static Moisture proof Flexible

3D MARBLE

SERIES OF ECO CLAY

VIENTIANE ROCK

PERFORMANCE

All natural phenomena are condensed into a square inch, and the texture is like a natural wonder formed by the collision of rocks. It is breathtaking and allows people to enjoy the beautiful scenery of nature.

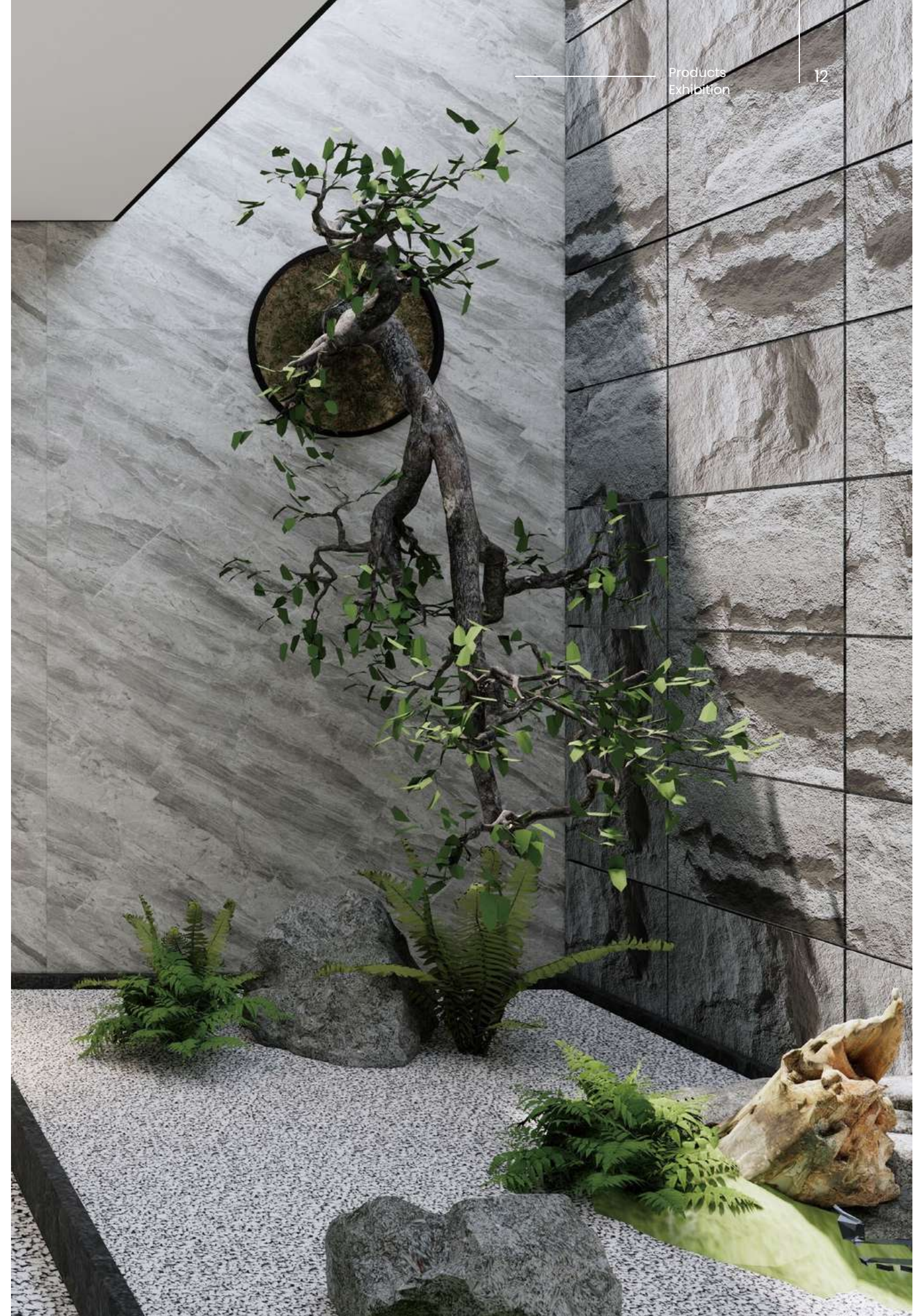
SIZE

600×1200×2.5(±1)mm

MATT



Lightweight High temperature Anti-Age Antifreeze Anti-static Moisture proof Flexible





3D MARBLE

SERIES OF ECO CLAY

YELLOW STONE

PERFORMANCE

Yellowstone Park is known as the "palette of nature". Various natural landscapes grow wildly and blend together. It is the most magical beauty on the earth, with the decorative effect of returning to nature and returning to nature.

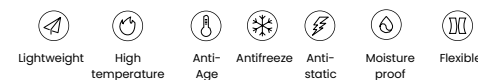
MODEL

FLX-092

SIZE

600×1200×3.5(±1)mm

MATT



Lightweight High temperature Anti-Age Antifreeze Anti-static Moisture proof Flexible

3D MARBLE

SERIES OF ECO CLAY

COLD MOUNTAIN WHITE MARBLE

PERFORMANCE

The texture of natural marble icebergs has a unique and dynamic beauty. Large-area paving can calmly blend disorder and harmony into one.

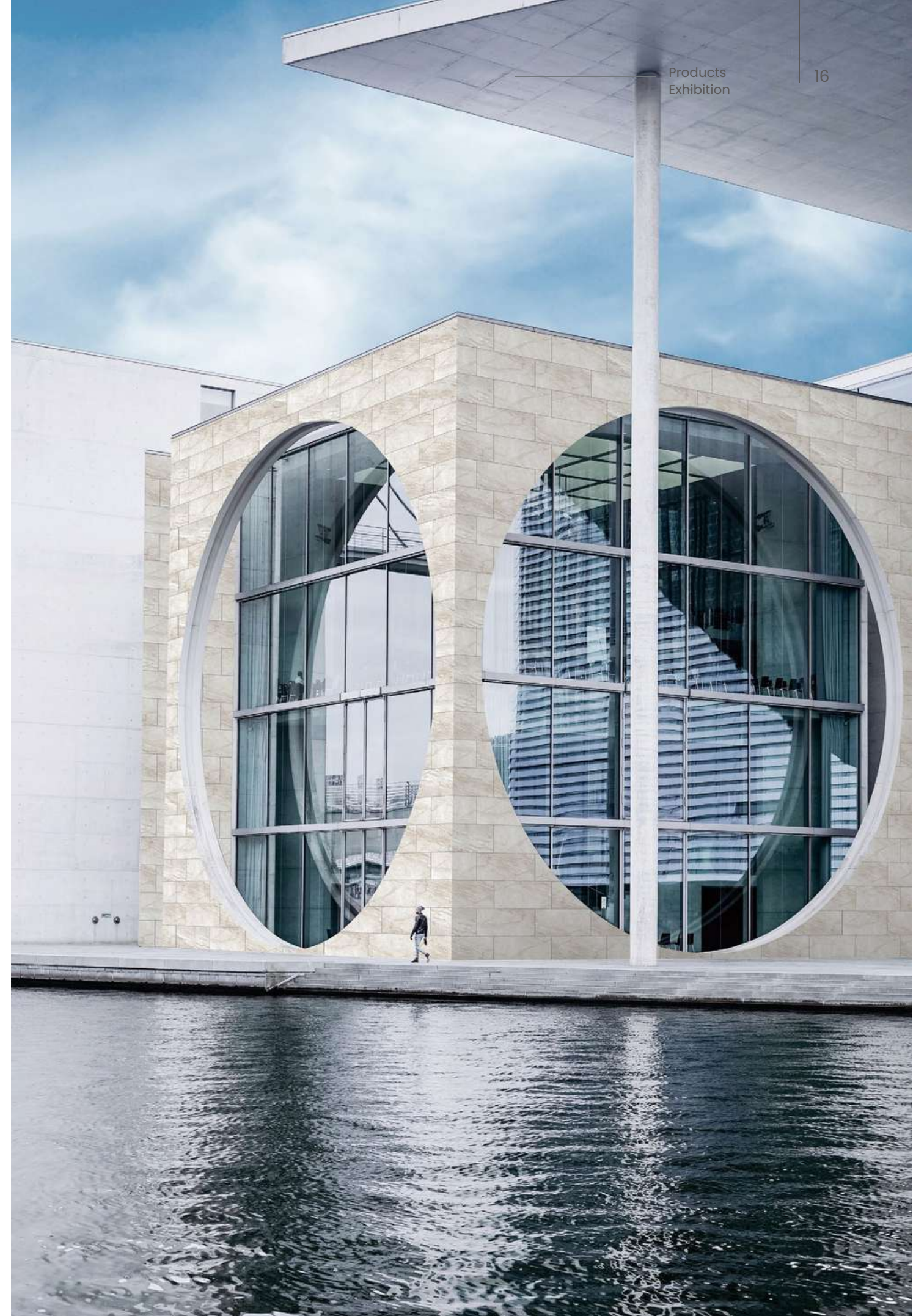
MODLE

FLX-093

SIZE

600×1200×2.5(±1)mm

MATT





3D MARBLE

SERIES OF ECO CLAY

CLOUD WHITE MARBLE

PERFORMANCE

The texture effect is like flowing clouds and flowing water, like clouds floating in the sky. It is majestic, layered and rich in connotation, and is suitable for a variety of architectural styles.

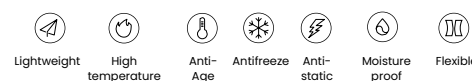
MODEL

FLX-094

SIZE

600×1200×2.5(±1)mm

MATT



Lightweight High temperature Anti-Age Antifreeze Anti-static Moisture proof Flexible



3D MARBLE

SERIES OF ECO CLAY

MONICA BLACK MARBLE

PERFORMANCE

One of the classic black marble patterns, the color is deep and beautiful, which can add elegance and dignity to the building.

MODLE

FLX-099

SIZE

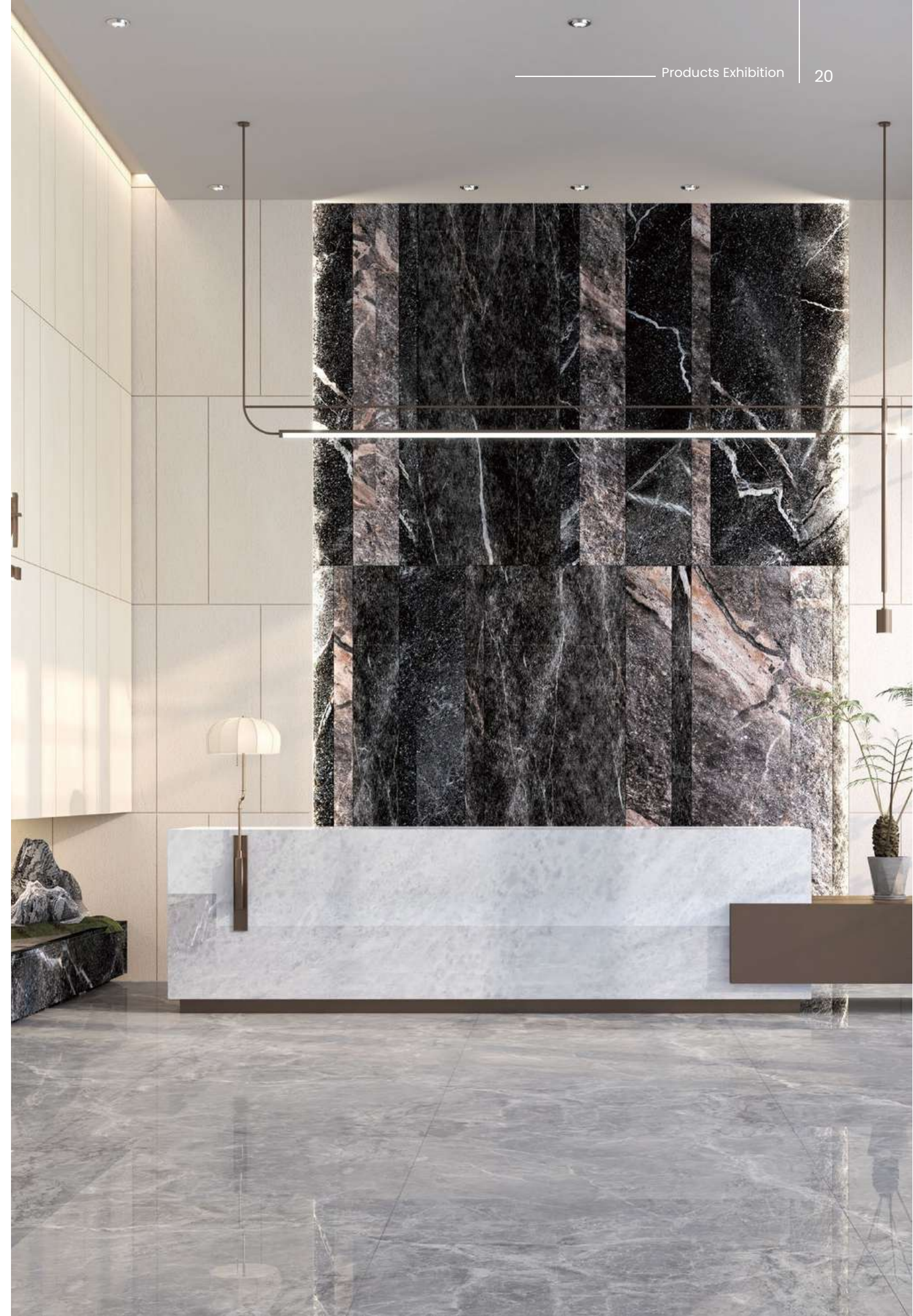
600×1200×2.5(±1)mm

MATT



Lightweight High temperature Anti-Age Antifreeze Anti-static Moisture proof Flexible

Flexira



3D MARBLE

SERIES OF ECO CLAY

SKY SAND LIGHT BEIGE

PERFORMANCE

The soft tones and delicate texture can add a natural and elegant beauty to whether it is a family home or a commercial space.

MODLE

FLX-097

SIZE

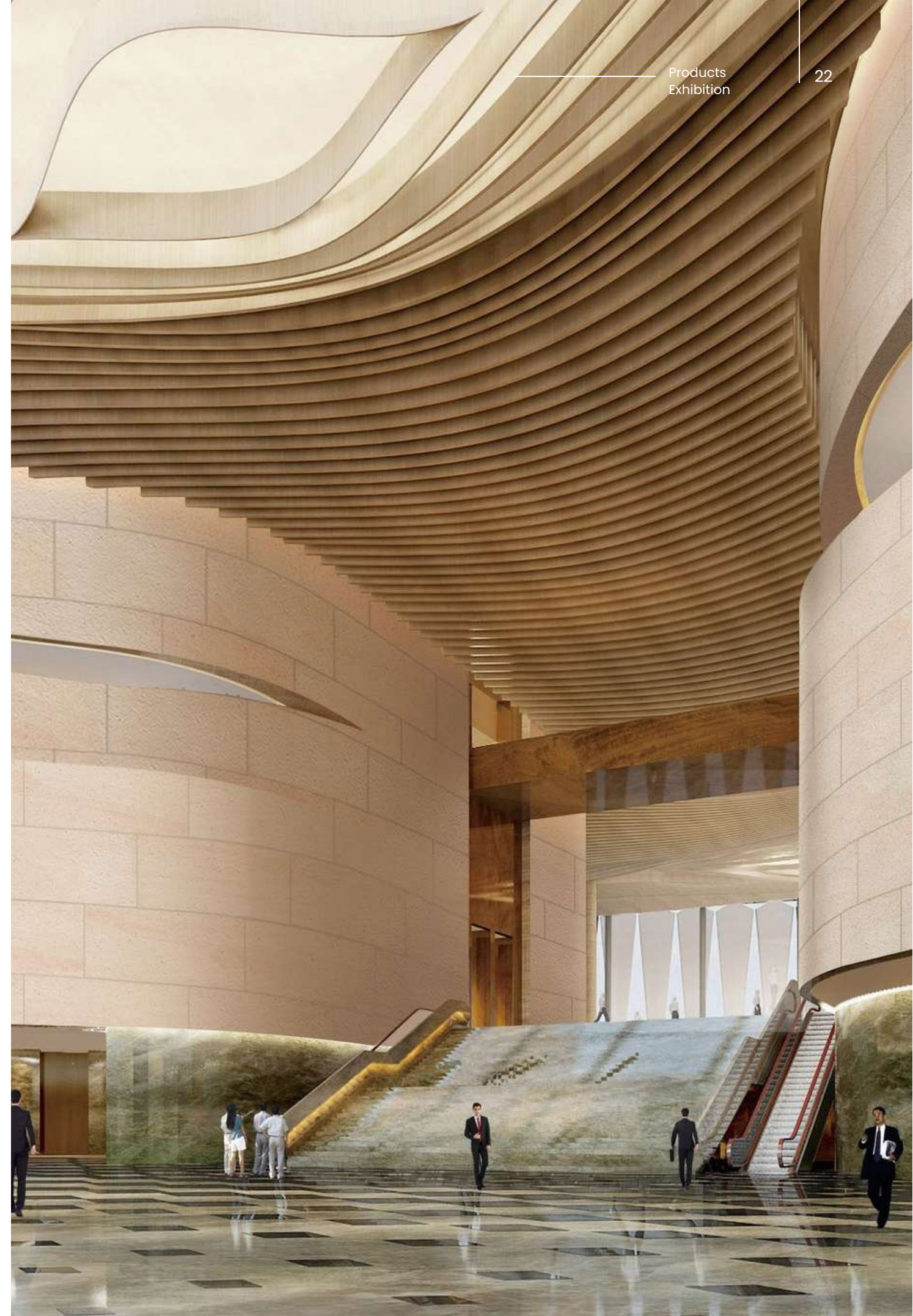
600×1200×2.5(±1)mm

MATT



Lightweight High temperature Anti-Age Antifreeze Anti-static Moisture proof Flexible

Flexira



3D TRAVERTINE SERIES

The unevenness and natural texture highly restore the travertine texture that has experienced vicissitudes of life, containing the precipitation of time and the power of nature.



3D TRAVERTINE

SERIES OF ECO CLAY

CLOUD WHITE TRAVERTINE

PERFORMANCE

Combined with 3D printing technology, it not only retains its delicate and natural beauty, but also adds tough texture that reflects the traces of time, pure color and clear texture.

SIZE

600×1200×3.5(±1)mm

MATT





3D TRAVERTINE

SERIES OF ECO CLAY

CLOUD GRAY CAVE

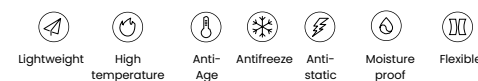
PERFORMANCE

White and gray are interlaced, like water and clouds, depositing the texture of natural travertine. Its texture is flexible and free, as light as tulle, and highly malleable, deducing the dynamic aesthetics of the space.

SIZE

600×1200×3.5(±1)mm

MATT



Lightweight High temperature Anti-Age Antifreeze Anti-static Moisture proof Flexible

3D TRAVERTINE

SERIES OF ECO CLAY

STAR RIVER CAVE

PERFORMANCE

The bright stars are dreamlike, mysterious and beautiful, and the vertical and horizontal uneven texture of the travertine surface can further enhance the space, expand the vision, and enhance the decorative texture.

SIZE

600×1200×3.5(±1)mm

MATT



Lightweight High temperature Anti-Age Antifreeze Anti-static Moisture proof Flexible





3D TRAVERTINE

SERIES OF ECO CLAY

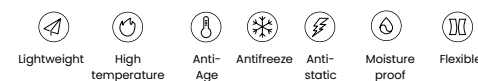
CLOUD BEIGE TRAVERTINE

PERFORMANCE

Combined with 3D printing technology, it not only retains its delicate and natural beauty, but also adds tough texture that reflects the traces of time, pure color and clear texture.

SIZE
600×1200×3.5(±1)mm

MATT



3D WOOD GRAIN SERIES

Purely natural solid wood texture and texture, taste the tranquility and warmth of nature.



3D WOOD GRAIN

SERIES OF ECO CLAY

TIME WOOD YELLOW

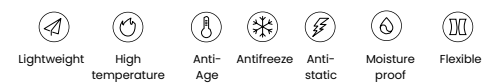
PERFORMANCE

Time is like wood, and time is like grain, just like the texture of thousand-year-old wood. The delicate texture reveals calmness and warmth, savoring the beauty of nature, and the choice for elegant life.

SIZE

300×1200×2.5(±1)mm

MATT



Flexira





3D LINE STONE

SERIES OF ECO CLAY

STAR WIDE LINE WHITE

PERFORMANCE

The texture is rough and powerful, the lines are concave and convex, and the touch is rough but soft. It can show the original beauty of nature and add unique personality and artistic atmosphere to the space.

SIZE

600×1200×1~4.5mm

MATT

- Lightweight
- High temperature
- Anti-Age
- Antifreeze
- Anti-static
- Moisture proof
- Flexible



CULTURAL STONE SERIES

Combining natural elements with modern technology, the texture and artistry of stone are fully demonstrated.





CULTURAL STONE

SERIES OF ECO CLAY

RAMMED EARTH BROWN RED

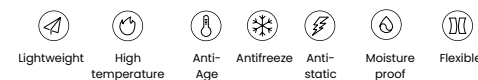
PERFORMANCE

The texture of the brown-red rammed earth is rough, bold, and casual, with a strong local flavor. It immerses people in the artistic conception of nature, relieves tension, and makes life more comfortable.

SIZE

600×1200×2.5(±1)mm

CLAY



Lightweight High temperature Anti-Age Antifreeze Anti-static Moisture proof Flexible



CULTURAL STONE

SERIES OF ECO CLAY

RAMMED EARTH LIGHT GREY

PERFORMANCE

After years of precipitation, rammed earth exudes an elegant gray luster. It is a perfect fusion of simplicity and modernity, bringing a warm and comfortable atmosphere to the space, and is suitable for various styles and occasions.

SIZE

600×1200×2.5(±1)mm

CLAY



Lightweight High temperature Anti-Age Antifreeze Anti-static Moisture proof Flexible



CULTURAL STONE

SERIES OF ECO CLAY

SNOW MOUNTAIN SLATE

PERFORMANCE

The appearance is like a rock covered by snow-capped mountains, which is stable and atmospheric. It is very suitable for indoor and outdoor decoration and can bring a natural and atmospheric beauty to the space.

SIZE

600x1200x1~3.5mm

MATT





CULTURAL STONE

SERIES OF ECO CLAY

CEMENT BOARD

PERFORMANCE

The looming floating clouds and flowing water patterns flow naturally like clear springs, highlighting the agile and elegant temperament of the space.

SIZE
600×1200×2.5(±1)mm

MATT

- 
Lightweight
- 
High temperature
- 
Anti-Age
- 
Antifreeze
- 
Anti-static
- 
Moisture proof
- 
Flexible





CULTURAL STONE

SERIES OF ECO CLAY

CARVED TIME GREY

PERFORMANCE

The texture seems to have been carefully carved by the carver. It is delicate and exquisite, recording the passage of time and the precipitation of history, and arousing people's thinking and memories of history and culture.

SIZE

300×600×3~5mm

MATT

- Lightweight
- High temperature
- Anti-Age
- Antifreeze
- Anti-static
- Moisture proof
- Flexible



CULTURAL STONE

SERIES OF ECO CLAY

GOUR GREY

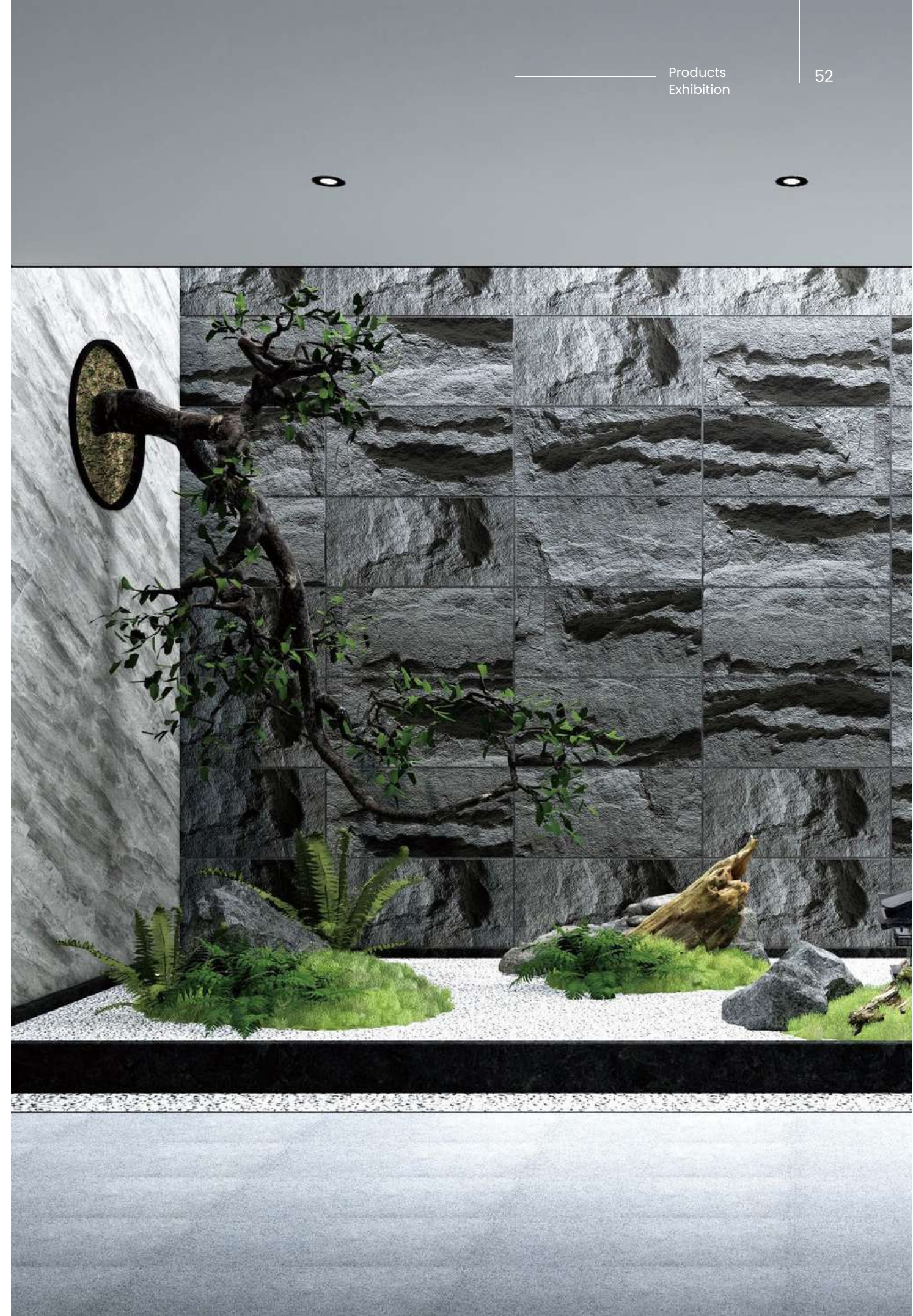
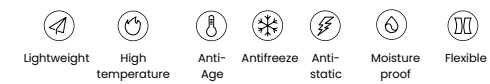
PERFORMANCE

It highly restores the texture of the mushroom stone that has experienced vicissitudes of life, with uneven and natural texture, full of charm, and brings a beautiful artistic conception of returning to nature.

SIZE

400×800×30~150mm

MATT





CULTURAL STONE

SERIES OF ECO CLAY

GOUR WHITE

PERFORMANCE

It highly restores the texture of the mushroom stone that has experienced vicissitudes of life, with uneven and natural texture, full of charm, and brings a beautiful artistic conception of returning to nature.

SIZE

400×800×30~150mm

MATT

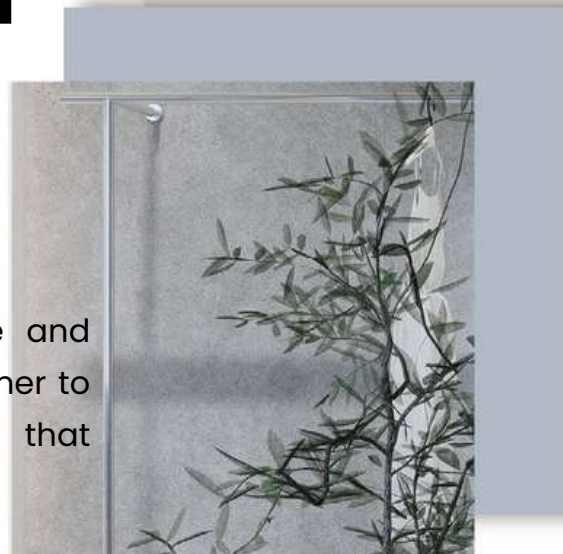


Lightweight High temperature Anti-Age Antifreeze Anti-static Moisture proof Flexible



CEMENT SERIES

The delicate cement texture and soft muted tones blend together to create a natural aesthetic that returns to nature.



CEMENT

SERIES OF ECO CLAY

BLUISH GRAY

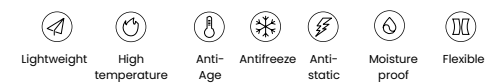
PERFORMANCE

The blue-gray texture is delicate and soft, presenting a light, cloud-like texture. It is suitable for various decorative fields and can bring a natural and tranquil feeling to the space.

SIZE

600×1200×2.5(±1)mm

MATT





CEMENT

SERIES OF ECO CLAY








CANNES GREY

PERFORMANCE

The looming floating clouds and flowing water patterns exude the unique charm of Cannes gray, highlighting the agile and elegant temperament of the space.

SIZE
600×1200×2.5(±1)mm

MATT

-  Lightweight
-  High temperature
-  Anti-Age
-  Antifreeze
-  Anti-static
-  Moisture proof
-  Flexible

ENGINEERING CASE

Real estate engineering

Shaanxi Xi'an Jintai Tang 618 Marketing Exhibition Center
Liuzao Resettlement House in Chuansha New Town, Shanghai
Shaanxi Culture Industry Investment Wenyuange Hotel



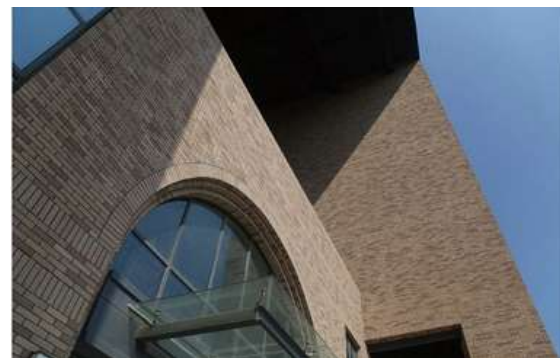
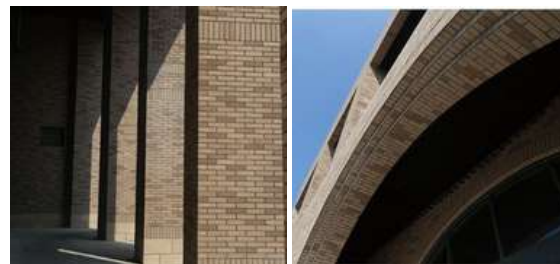
Shaanxi Xi'an Jintai Tang 618 Marketing Exhibition Center



Shaanxi Culture Industry Investment Wenyuange Hotel

School and hospital engineering

Taizhou University
Shanghai East China Normal University
Affiliated Middle School
Guangxi Minzu University



Taizhou University



Guangxi Minzu University

The old urban area renovation engineering

The Old City Renovation of Xiamen Golden Bricks in Fujian Province
Old Cities Renovation in Chengdu City and Zigong City in Sichuan Province



The Old City Renovation of Xiamen Golden Bricks in Fujian Province



Old Cities Renovation in Chengdu City and Zigong City in Sichuan Province

Others engineering

Guangzhou California Roll Western Restaurant
Fujian Xianyou Food City
The Old City Renovation of Luoyang Walking Street



Guangzhou California Roll Western Restaurant



Fujian Xianyou Food City



The Old City Renovation of Luoyang Walking Street

PRODUCT INDEX

3D MARBLE SERIES



VENUS YELLOW MARBLE
R3102F12 600x1200mm
THICKNESS 2.5(±1)mm



CARL YELLOW MARBLE
R3103F12 600x1200mm
THICKNESS 2.5(±1)mm



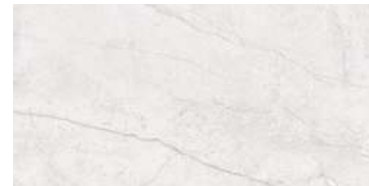
ROME BEIGE MARBLE
R3105F12 600x1200mm
THICKNESS 2.5(±1)mm



CLOD MOUNTAIN WHITE MARBLE
R3201F12 600x1200mm
THICKNESS 2.5(±1)mm



VENUS WHITE MARBLE
R3202F12 600x1200mm
THICKNESS 2.5(±1)mm



CARL WHITE MARBLE
R3203F12 600x1200mm
THICKNESS 2.5(±1)mm



CLOUD WHITE MARBLE
R3204F12 600x1200mm
THICKNESS 2.5(±1)mm



CLOD MOUNTAIN GREY
R3401F12 600x1200mm
THICKNESS 2.5(±1)mm



VENUS GREY MARBLE
R3402F12 600x1200mm
THICKNESS 2.5(±1)mm



CARL GREY MARBLE
R3403F12 600x1200mm
THICKNESS 2.5(±1)mm



CLOUD GREY MARBLE
R3404F12 600x1200mm
THICKNESS 2.5(±1)mm



MONICA BLACK MARBLE
R3509F12 600x1200mm
THICKNESS 2.5(±1)mm



CARL BLUE MARBLE
R3703F12 600x1200mm
THICKNESS 2.5(±1)mm



SKY SAND LIGHT BEIGE
R7101F12 600x1200mm
THICKNESS 2.5(±1)mm



SKY SAND DARK GREY
R7401F12 600x1200mm
THICKNESS 2.5(±1)mm



SKY SAND GREY R7403F12
600x1200mm
THICKNESS 2.5(±1)mm



MOONLIGHT SAND ROCK R7602F12
600x1200mm
THICKNESS 2.5(±1)mm



CLOUD YELLOW MARBLE R3104F12
600x1200mm
THICKNESS 2.5(±1)mm



PISA ROCK R3402S12 600x1200mm
THICKNESS 2.5(±1)mm



VIENTIANE ROCK R3401S12
600x1200mm
THICKNESS 2.5(±1)mm



RUKAWA ROCK R3401M12
600x1200mm
THICKNESS 3.5(±1)mm



YELLOWSTONE R3101M12
600x1200mm
THICKNESS 3.5(±1)mm



ARGUS BLACK R2509M12
600x1200mm
THICKNESS 2.5(±1)mm

3D TRAVERTINE SERIES



CLOUD BEIGE TRAVERTINE
R3104D12 600x1200mm
THICKNESS 3.5(±1)mm



CLOUD WHITE TRAVERTINE
R3204D12 600x1200mm
THICKNESS 3.5(±1)mm



STAR RIVER GOLD
R6102D12 600x1200mm
THICKNESS 3.5(±1)mm



STAR RIVER WHITE
R6202D12 600x1200mm
THICKNESS 3.5(±1)mm



CLOUD GREY CAVE
R3401D12 600x1200mm
THICKNESS 3.5(±1)mm



STAR RIVER CAVE
R3402D12 600x1200mm
THICKNESS 3.5(±1)mm

3D GRANITE SERIES



BEIGE FLAT GRANITE
R2101F12 600x1200mm
THICKNESS 2.5(±1)mm



WHITE GRANITE
R2201F12 600x1200mm
THICKNESS 2.5(±1)mm



WHITE FLOWER ROUGH GRANITE
R2201L12 1380x600mm
THICKNESS 2.5(±1)mm



GOLD ROUGH GRANITE
R2801L12 1380x600mm
THICKNESS 2.5(±1)mm

3D WOOD GRAIN SERIES



TIME WOOD YELLOW
R5101F13 300x1350mm
THICKNESS 2.5(±1)mm



GREEN HILL WOOD GRAIN
R5201F13 300x1350mm
THICKNESS 2.5(±1)mm

3D LINE STONE SERIES



LINE GRAIN GOLD THREAN STONE
R2801S12 600x1200mm
THICKNESS 2.5(±1)mm



STAR LINE BEIGE R3116S12
600x1200mm
THICKNESS 2.5(±1)mm



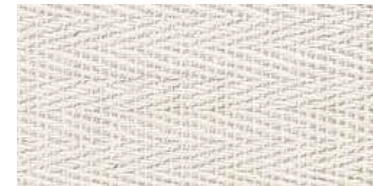
STAR LINE WHITE R3216S12
600x1200mm
THICKNESS 2.5(±1)mm



STAR WIDE LINE WHITE
R3206S12 600x1200mm
THICKNESS 1-4.5mm



STAR WIDE LINE GREY
R7403S12 600x1200mm
THICKNESS 1-4.5mm



WOVEN STONE
R4201S12 600x1350mm
THICKNESS 1-4.5mm

CULTURAL STONE SERIES



SNOW MOUNTAIN SLATE
R6204S12 600x1200mm
THICKNESS 1-3.5mm



CEMENT BOARD R6401F12
600x1200mm THICKNESS 2.5(±1)mm



GOUR WHITE
R6201S48 400x800mm
THICKNESS 30-150mm



CARVED TIME WHITE
R6203S36 300x600mm
THICKNESS 3-5mm



CARVED TIME GREY
R6403S36 300x600mm
THICKNESS 3-5mm



GOUR GREY
R6401S48 400x800mm
THICKNESS 30-150mm



RAMMED EARTH BROWN LIGHT GREY
R6404G12 600x1200mm
THICKNESS 2.5(±1)mm



RAMMED EARTH BROWN RED
R6409G12 600x1200mm
THICKNESS 2.5(±1)mm

CEMENT SERIES



BLUISH GREY R0401A12
600x1200mm THICKNESS 2.5(±1)mm



CANNES GREY R7401A12
600x1200mm THICKNESS 2.5(±1)mm

SPLIT TILES SERIES



IMPRESSION RED R1602K60
60x240mm
THICKNESS 2.5(±1)mm



RURAL RED R1603A60
60x240mm
THICKNESS 2.5(±1)mm



KNIGHT RED R1604A60
60x240mm
THICKNESS 2.5(±1)mm



RURAL WHITE R1202A60
60x240mm
THICKNESS 2.5(±1)mm



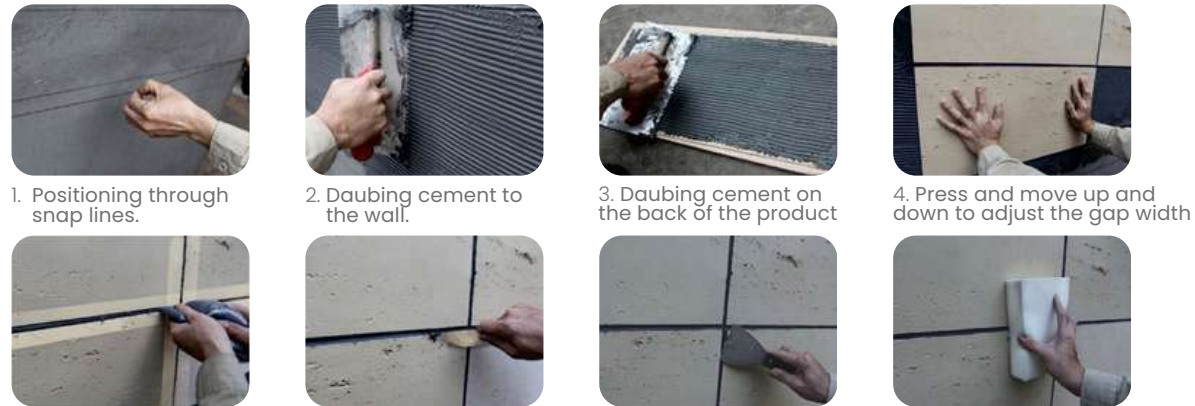
OSCHIN R1404A60
60x240mm
THICKNESS 2.5(±1)mm



TIME WHITE R1203K60
60x240mm
THICKNESS 2.5(±1)mm


CONSTRUCTION GUIDELINES

ECO Clay Construction process diagram (Full adhesive pasting, leaving gaps for paving)




1. Positioning through snap lines.
2. Daubing cement to the wall.
3. Daubing cement on the back of the product
4. Press and move up and down to adjust the gap width
5. Protect the surface of the product on both sides of the gap with textured paper, and then use specialized sealant or structural adhesive to fill the gap.
6. Use Ø 8mm steel bars to pull the 6mm joint, and perform it when the filling agent is semi dry.
7. Scrape off the scraps with a small shovel.
8. Using a dry sponge to remove dust.

Handling process diagram



1. Two people should assist in rolling the ECO clay into a cylinder from the flat wooden box, and temporarily tie it with straps or fix it with adhesive tape to prevent scattering.
2. Two people should work together to move cylindrical ECO clay onto a small cart, and handle it gently to protect the edges and corners.
3. Push the small cart along with the ECO clay into the elevator.
4. Gour or relief type soft porcelain cannot be rolled into cylindrical shapes for transportation. Two people can work together to lift the ECO clay vertically along the side. When entering the elevator, the ECO clay can be bent into a certain arc and transported diagonally along the elevator.

Handheld cutting machine cutting process diagram 1



1. Mark with a pencil, align the marks, press down on the ruler or secure the track.
2. The electric cutting machine cuts along the cutting marking line from the beginning to the end.
3. Cut off the excess ECO clay.

Wallpaper Knife Cutting Process Diagram 2



1. You can also use a wallpaper knife for cutting.
2. Measure the required size of the soft porcelain to be cut using a roll scale, make a mark, align the mark, and press the ruler.
3. Use a wallpaper knife to forcefully scratch along the edge of the ruler from the beginning to the end, and you can scratch several times.
4. Cut off the excess ECO clay

General tool diagram



Serrated trowel Rubber plate steel ruler Masking Tapes Cutting knife ink fountain

Configuration tool diagram



- ① Electric mixer
- ② Mixing bowl
- ③ electronic balance
- ④ shovels

Cleaning materials and tools illustrated



Trowel

Square Sponge

POINTS TO NOTE

1. Product Characteristics

Surface imperfections found in sandstone and other soft porcelain products with multiple lines, like travertine, must be kept clean and free from contamination by adhesives, cement, paint, and other materials during construction. Builders need to protect the product and themselves by wearing gloves or keeping their hands clean.

Note: The construction sequence should be from top to bottom.

2. Bonding agent and caulking agent selection

(1) Binder: special binder of similar colour to the product colour should be selected.

(2) Caulking agent: special caulking agent or silicone weathering adhesive of matching colour with the product can be selected.

Note: To prevent the occurrence of alkaline and white residue, utilize low alkaline or non-alkaline binders, caulks, and weather-resistant silicone adhesives.

3. Construction tools

- | | |
|--|--|
| (01) Special binder; | (09) Portable electric cutter; |
| (02) Caulk or silicone weathering compound of your choice; | (10) Matching caulking gun; |
| (03) Clean mortar buckets; | (11) Mylar; |
| (04) Portable electric mixer; | (12) Guns nailed; |
| (05) Serrated trowel; | (13) Brush; |
| (06) Grey Knife; | (14) Soft porcelain surface glaze; |
| (07) Paper cutter; | (15) Quick-stick adhesive for soft ceramics. |
| (08) Angle Ruler; | |

4. Scraping Requirements

(1) The special binder must be evenly applied with a sawtooth trowel;

(2) The binder is 2-3mm thick (tooth depth), and the full slurry degree must reach more than 90%;

(3) Leave 1-1.5cm space at both ends of the periphery, which is convenient for hand holding, and also can avoid the binder overflowing into the gap and staining the product surface.

(4) When paving the product, softly press the surface of the product to the back of the paste evenly full and flat, so that the gap adjusted to the right size.

5. Stay-stitched paste and dense seam paste requirements

(1) For the best result, it is important to determine the appropriate seam width and leaving space according to the design requirements. During the pasting process, it is crucial to clean up the excess binder overflowing onto the brick seam in a timely manner to avoid any negative impact on the final outcome.

(2) For soft porcelain products, wide grain line stone, fine grain line stone, and similar materials, either a dense seam paste or a uniform 0.5-1mm gap can be used to enhance the three-dimensional effect of the stone.

Note: Prior to caulking, ensure the product is flat and free of surface dust. Use a 35mm wide paper to protect both sides of the gap, preventing the product surface from becoming dirty during caulking and compromising its aesthetic appeal.

6. Sunny corners, shady corners, window sill pasting requirements

(1) For sunny corners, create a 45-degree angle along the joint to create a cavity. Crush the corners to fill any gaps and use a special adhesive to bond the joints quickly. Once the adhesive has dried, use sandpaper or a sander to trim the corner, ensuring a 90-degree square corner. Additionally, you may use matching corner stones to expedite the construction process.

(2) For shady corners, use flat products and a 90-degree crimping method, ensuring that the lap edge is relatively flat. If part of the product's surface has a concave and convex texture, use other materials for closing such as metal edging strips, solid wood strips, or other closing materials.

(3) For the window sill, the treatment of a sunny corner can be used.

7. Tile surface, metal surface, wood surface, cement surface, paint surface pasting requirements

(1) Tile and metal surfaces: On sunny days, if on the first or second floor, use a two-part cement-based binder to apply the adhesive evenly and smoothly on the back of the product before installing. If on the third floor or higher, first apply a cement-based interface agent and then use a serrated trowel to spread the bonding agent evenly and smoothly on the back of the product before installing.

(2) For wooden surfaces, you can nail the product directly on the inner wall with a gun. Use quick adhesive to fix the edges and corners. To paste on the external wall, waterproof it first, and then apply an even layer of adhesive on the back of the product using a sawtooth trowel. Use a two-component binder for better results. (3) For cement-based, cement board, or gypsum board surfaces, use a sawtooth trowel to apply the adhesive directly on the back of the product. Scrape it evenly and flatly for pasting.

(4) Paint Surface: Before pasting, prepare the paint surface carefully. Apply adhesive to the surface if needed. Remove any areas that have chalking, peeling, or hollow spots by thoroughly scraping them away. If no areas need to be removed, use a sawtooth trowel to evenly scrape the surface and create a flat base layer for the wallpaper.

Note: For big products, you can secure the adhesive process by using gun nails to avoid downward motion.

8. Cleaning requirements

According to national construction industry standards, stone, tile adhesive, and caulking require the addition of a specific amount of polymer glue powder or emulsion. As a result, cleaning a contaminated adhesive surface can be challenging.

Please note the following precautions: (1) Do not touch the surface of the product with dirty hands if the slurry is dirty to the hand to prevent it from sticking.

If there is adhesive on the surface of the product, do not attempt to wipe it while wet. Instead, wait for it to dry and then scrape it off with a knife.

To achieve better results, apply "soft porcelain surface glaze" using a brush in a top-to-bottom motion, ensuring even coverage on the soft porcelain wall. Use a dry towel during the application process to remove excess glaze and prevent hanging or unevenness. It is important to diligently change to a new towel when wiping to avoid dirt and dust accumulation that may cause secondary pollution.