



HOMOGENEOUS

Culture

INTER HOMECARE

CERAMIQUE
Land of Great Ceramic & Tiles



Packing • Embalagem • Embalaje • Упаковка

size	thickness	pcs/box	m2/box	kg/box	box/plt	m2/plt	kg/plt
100X600	8	10	1.60	32	40	64	1280
150X600	9	7	1.75	31	40	70	1240
300X600	10	8	1.44	30	40	57.6	1200
600X600	10	4	1.44	30	40	57.6	1200

HOMOGENEOUS

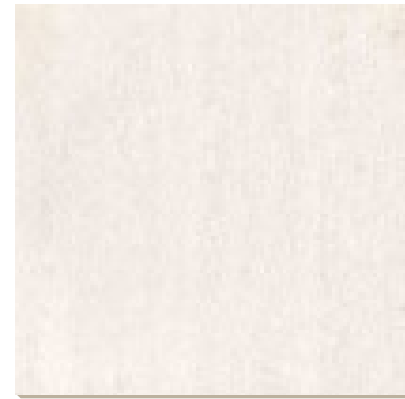
HOMOGENEOUS

CERAMIQUE
Land of Great Ceramic & Tiles

HOMOGENEOUS LIGHT COLOUR



LIGHT COLOUR BIANCO POLISHED



LIGHT COLOUR BIANCO MATT



LIGHT COLOUR BIANCO CRUDE



LIGHT COLOUR IVORY POLISHED



LIGHT COLOUR IVORY MATT



LIGHT COLOUR IVORY CRUDE



LIGHT COLOUR GREY POLISHED



LIGHT COLOUR GREY MATT



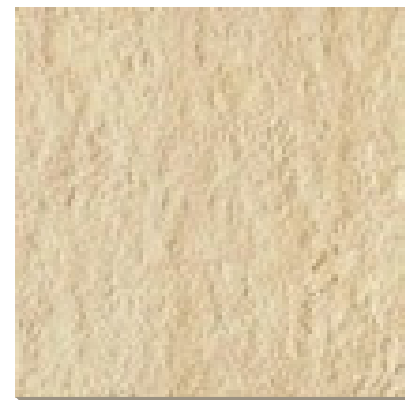
LIGHT COLOUR GREY CRUDE



LIGHT COLOUR CLAY POLISHED



LIGHT COLOUR CLAY MATT

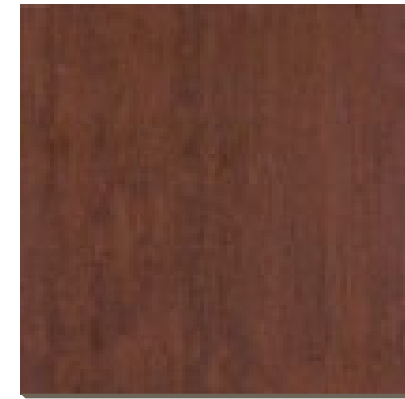


LIGHT COLOUR CLAY CRUDE

HOMOGENEOUS DARK COLOUR



DARK COLOUR BROWN POLISHED



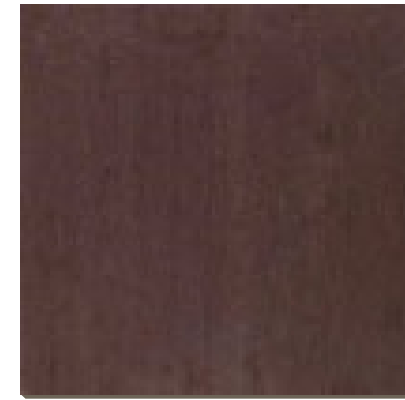
DARK COLOUR BROWN MATT



DARK COLOUR BROWN CRUDE



DARK COLOUR COFFEE POLISHED



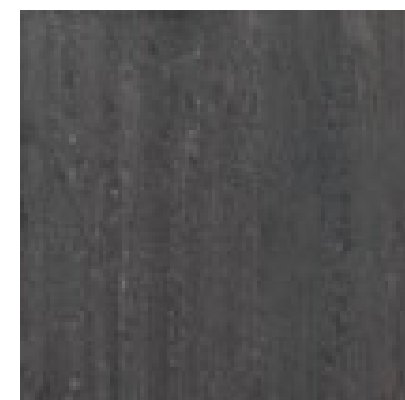
DARK COLOUR COFFEE MATT



DARK COLOUR COFFEE CRUDE



DARK COLOUR GREY POLISHED



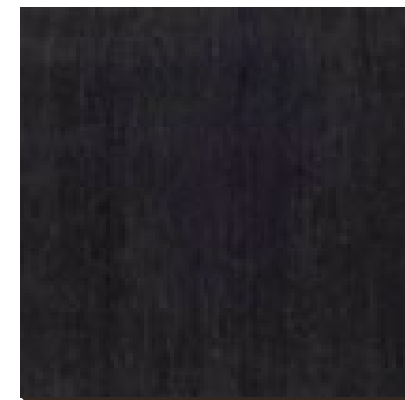
DARK COLOUR GREY MATT



DARK COLOUR GREY CRUDE



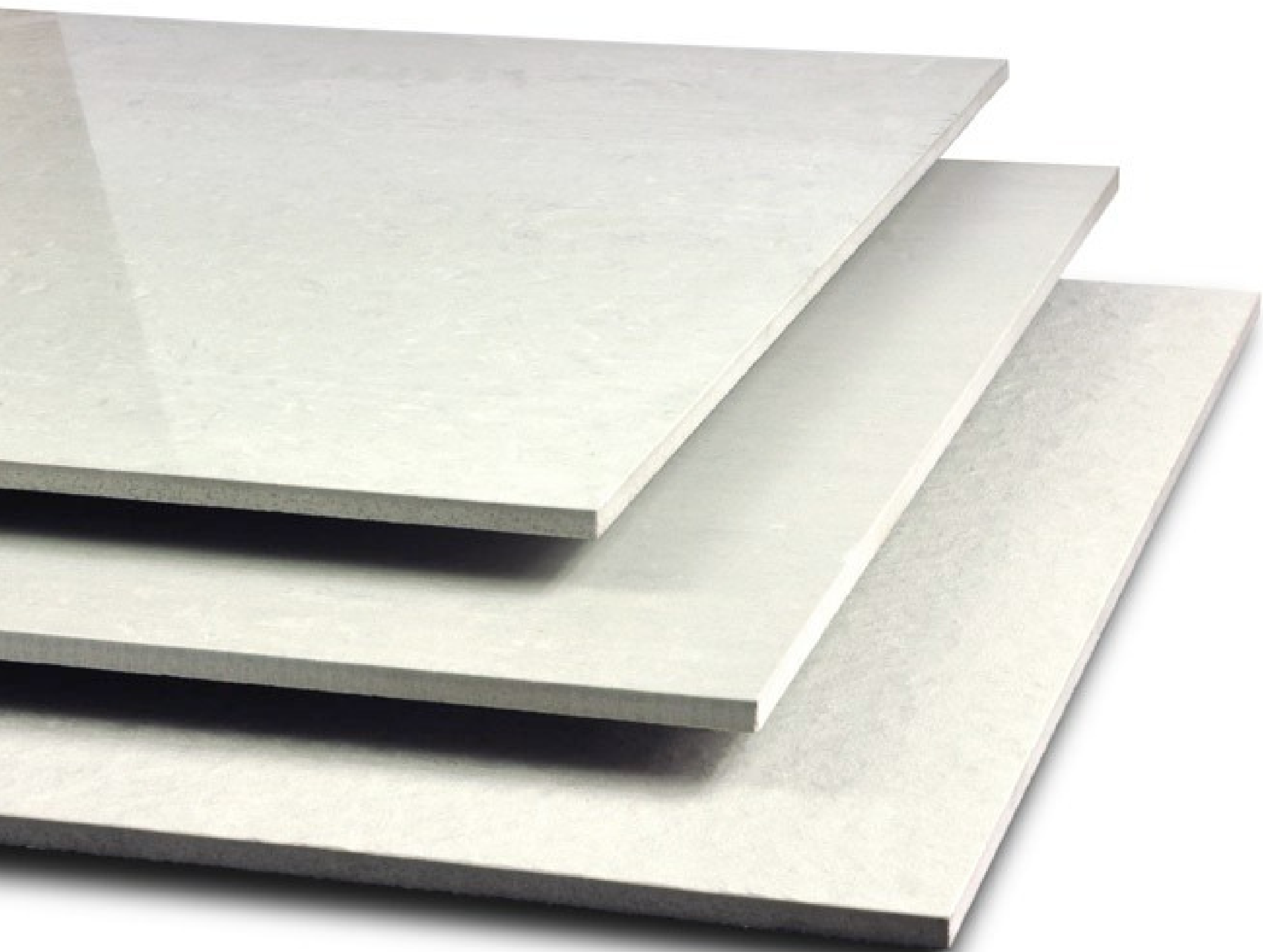
DARK COLOUR NERO POLISHED



DARK COLOUR NERO MATT



DARK COLOUR NERO CRUDE



LIGHT COLOUR BIANCO POLISHED



LIGHT COLOUR BIANCO MATT

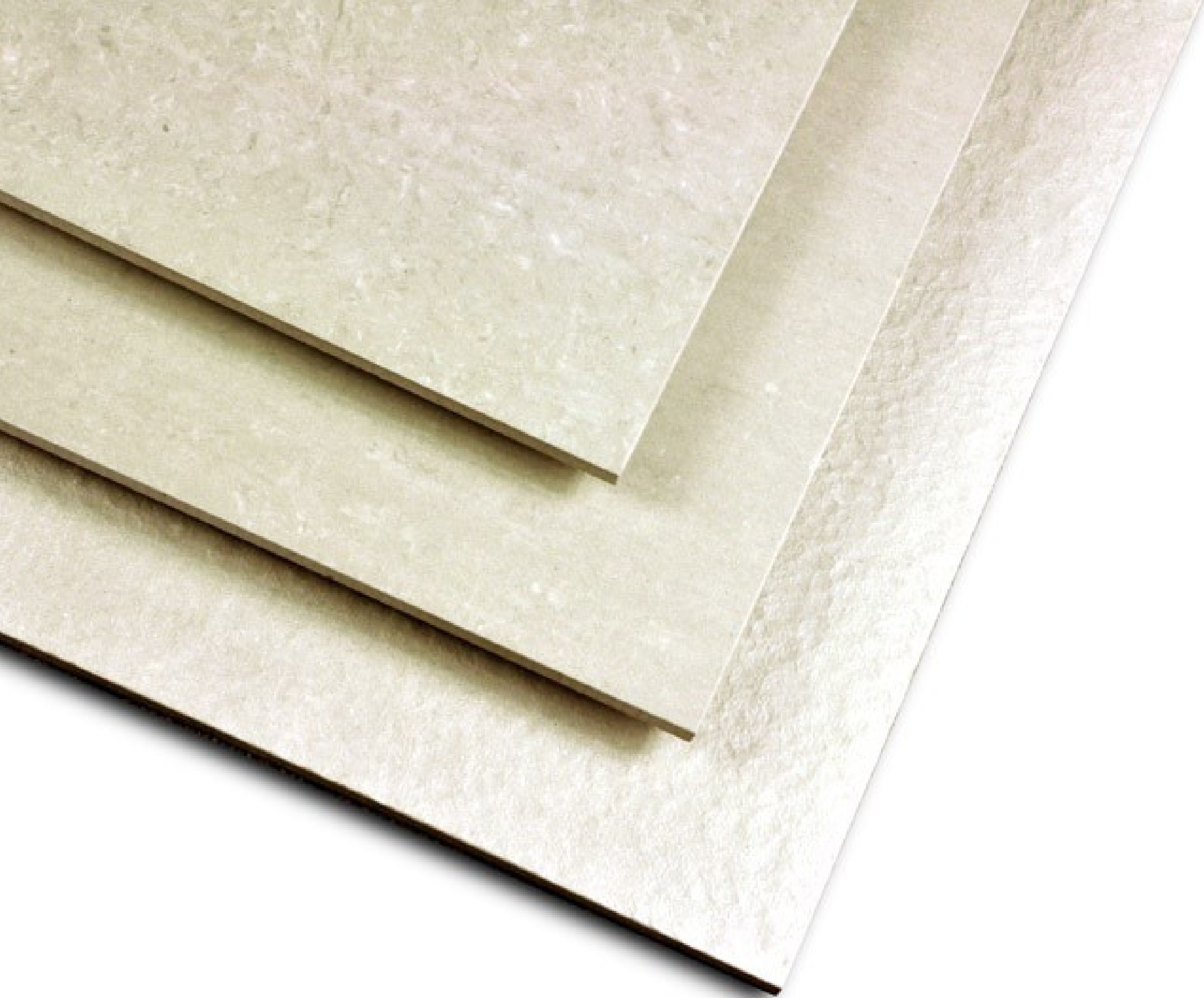


LIGHT COLOUR BIANCO CRUDE

HOMOGENEOUS

LIGHT COLOUR BIANCO

CERAMIQUE
Land of Great Ceramic & Tiles



LIGHT COLOUR IVORY POLISHED



LIGHT COLOUR IVORY MATT

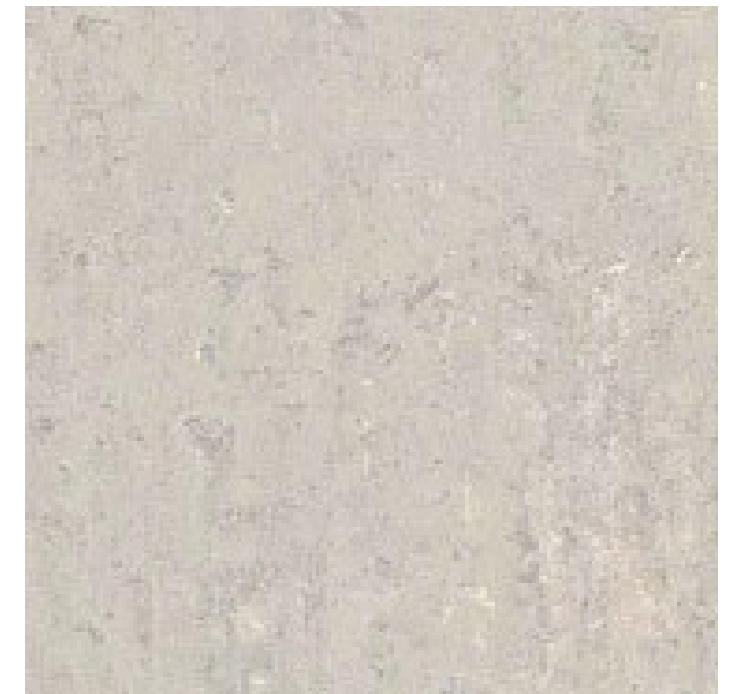


LIGHT COLOUR IVORY CRUDE

HOMOGENEOUS

LIGHT COLOUR IVORY

CERAMIQUE
Land of Great Ceramic & Tiles



LIGHT COLOUR GREY POLISHED



LIGHT COLOUR GREY MATT



LIGHT COLOUR GREY CRUDE

HOMOGENEOUS

LIGHT COLOUR GREY

CERAMIQUE
Land of Great Ceramic & Tiles

LIGHT COLOUR CLAY



LIGHT COLOUR CLAY POLISHED



LIGHT COLOUR CLAY MATT



LIGHT COLOUR CLAY CRUDE



DARK COLOUR BROWN



DARK COLOUR BROWN POLISHED



DARK COLOUR BROWN MATT



DARK COLOUR BROWN CRUDE



HOMOGENEOUS

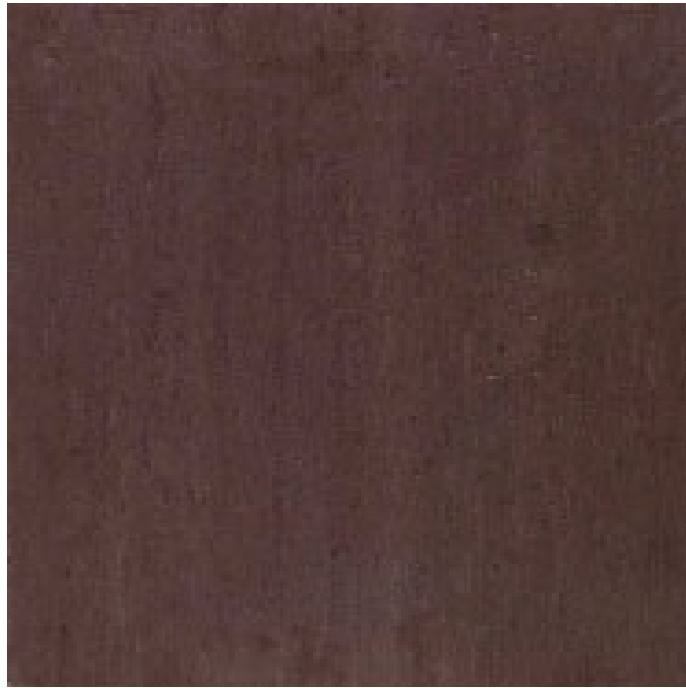


PAVEMENT: DARK COLOUR BROWN POLISHED

DARK COLOUR COFFEE



DARK COLOUR COFFEE POLISHED



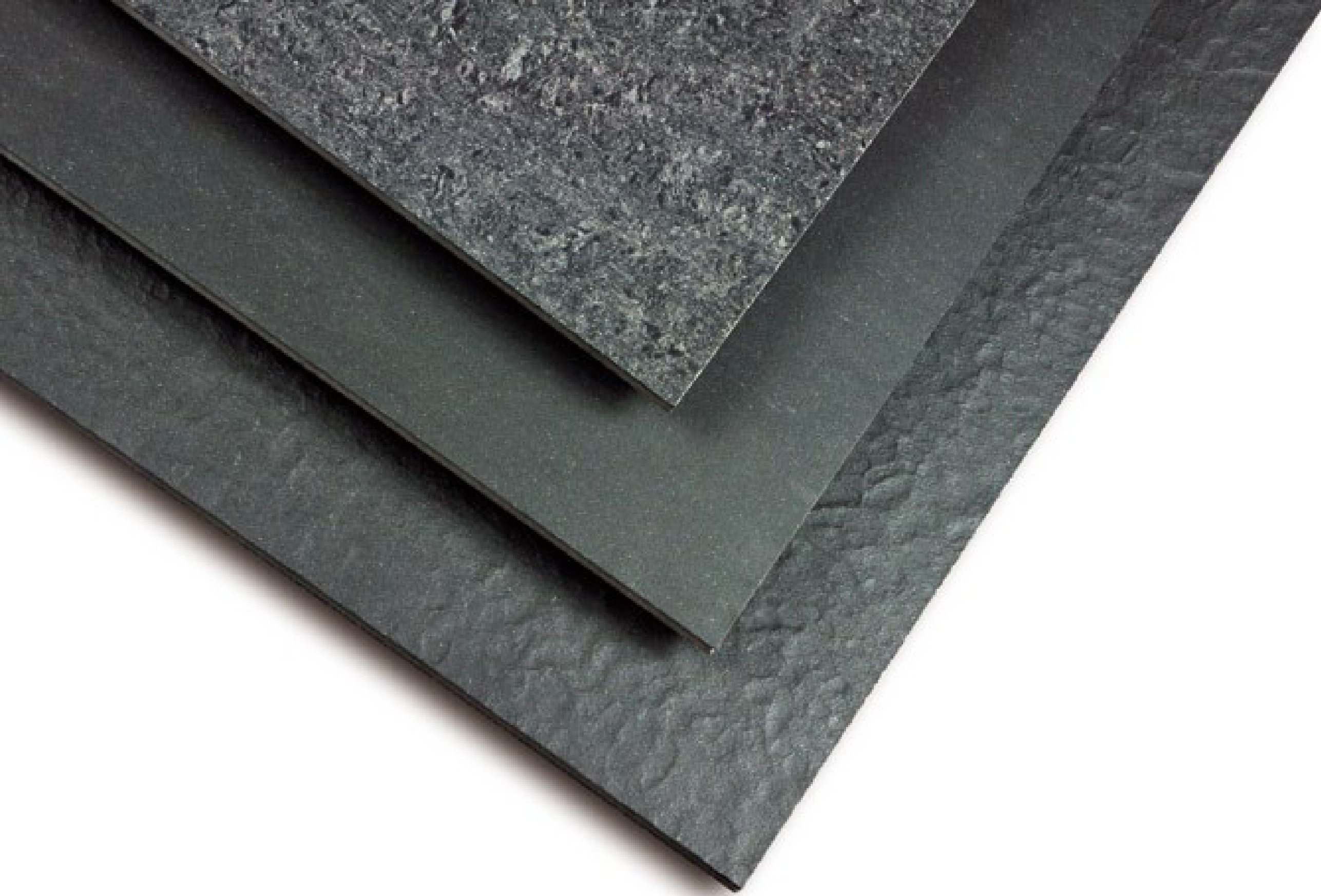
DARK COLOUR COFFEE MATT



DARK COLOUR COFFEE CRUDE



HOMOGENEOUS



DARK COLOUR GREY POLISHED



DARK COLOUR GREY MATT



DARK COLOUR GREY CRUDE

HOMOGENEOUS

DARK COLOUR GREY

CERAMIQUE
Land of Great Ceramic & Tiles

DARK COLOUR
NERO



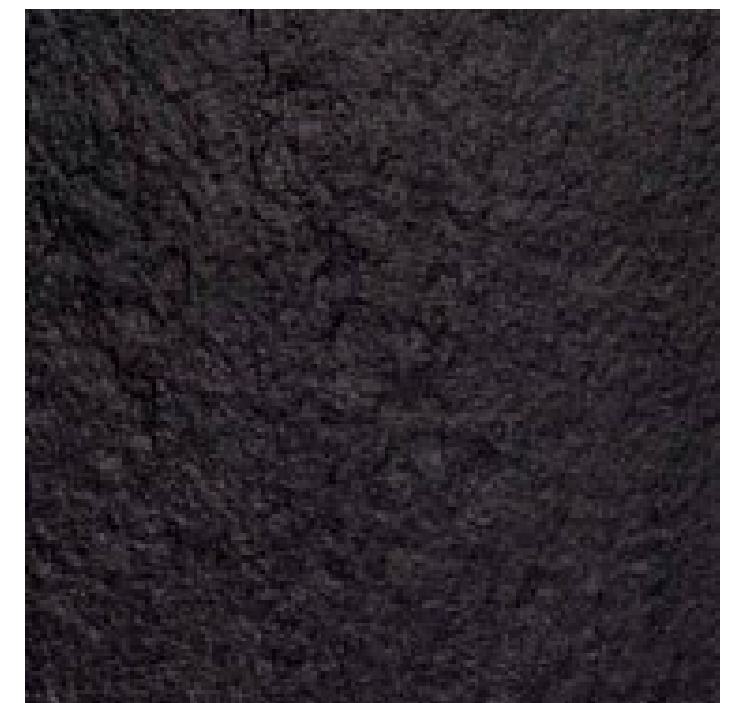
CERAMIQUE
Land of Great Ceramic & Tiles



DARK COLOUR NERO POLISHED



DARK COLOUR NERO MATT



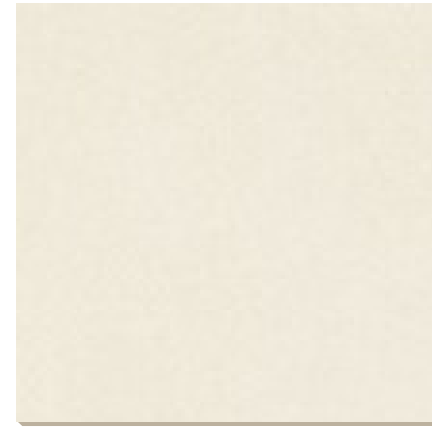
DARK COLOUR NERO CRUDE

HOMOGENEOUS

HOMOGENEOUS SAND



SAND SABBIA POLISHED



SAND SABBIA MATT



SAND SABBIA CRUDE



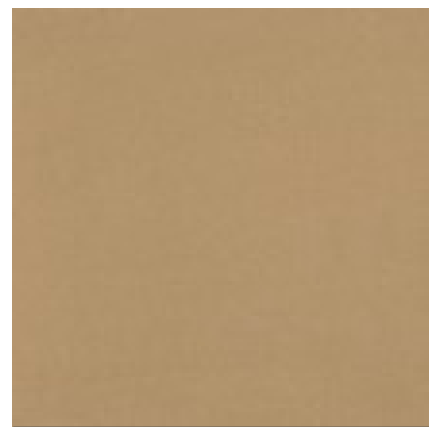
SAND CRETA POLISHED



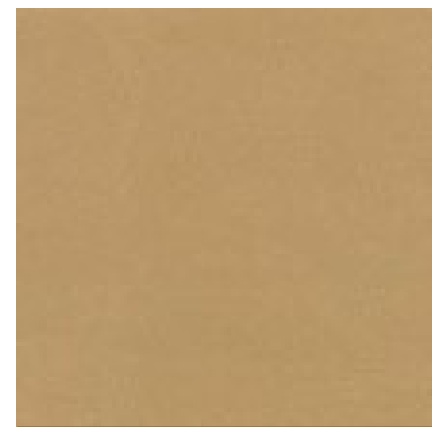
SAND CRETA MATT



SAND CRETA CRUDE



SAND COCA POLISHED



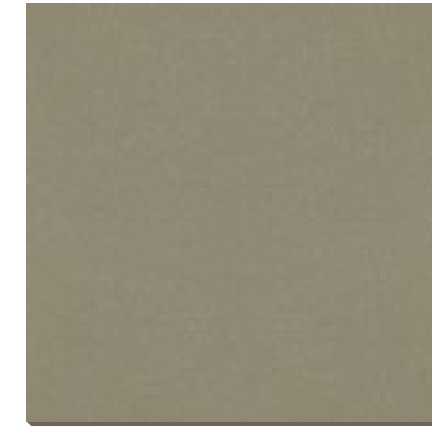
SAND COCA MATT



SAND COCA CRUDE



SAND GREEN POLISHED



SAND GREEN MATT



SAND GREEN CRUDE



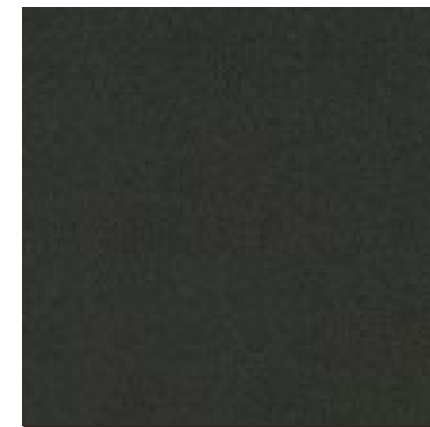
SAND COFFEE POLISHED



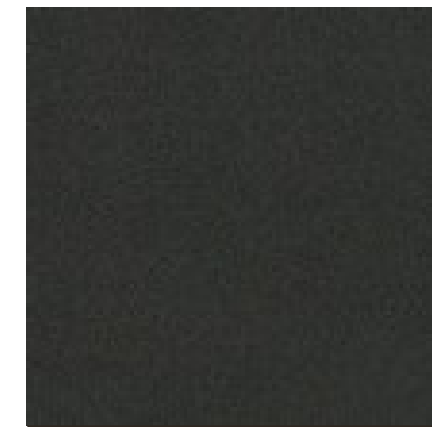
SAND COFFEE MATT



SAND COFFEE CRUDE



SAND NERO POLISHED



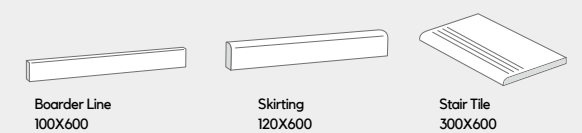
SAND NERO MATT



SAND NERO CRUDE

Packing • Embalagem • Embalaje • Упаковка

size	thickness	pcs/box	m ² /box	kg/box	box/plt	m ² /plt	kg/plt
100X600	8	10	1.60	32	40	64	1280
150X600	9	7	1.75	31	40	70	1240
300X600	10	8	1.44	30	40	57.6	1200
600X600	10	4	1.44	30	40	57.6	1200



HOMOGENEOUS

SAND SABBIA

PAVEMENT: SAND SABBIA MATT &
SAND SABBIA CURD

CERAMIQUE
Land of Great Ceramic & Tiles



SAND SABBIA POLISHED

SAND SABBIA MATT

SAND SABBIA CRUDE

HOMOGENEOUS



SAND CRETA

PAVEMENT: SAND CRETA
MATT & SAND CRETA CURD

CERAMIQUE
Land of Great Ceramic & Tiles



SAND CRETA POLISHED

SAND CRETA MATT

SAND CRETA CRUDE

HOMOGENEOUS



SAND COCA

PAVEMENT: SAND COCA
MATT & SAND COCA CURD

CERAMIQUE
Land of Great Ceramic & Tiles



SAND COCA POLISHED

SAND COCA MATT

SAND COCA CRUDE

HOMOGENEOUS



SAND GREEN
PAVEMENT: SAND GREEN
MATT & SAND GREEN CURD

CERAMIQUE
Land of Great Ceramic & Tiles



SAND GREEN POLISHED

SAND GREEN MATT

SAND GREEN CRUDE

HOMOGENEOUS



SAND COFFEE

PAVEMENT: SAND COFFEE
MATT & SAND COFFEE CURD

CERAMIQUE
Land of Great Ceramic & Tiles



SAND COFFEE POLISHED

SAND COFFEE MATT

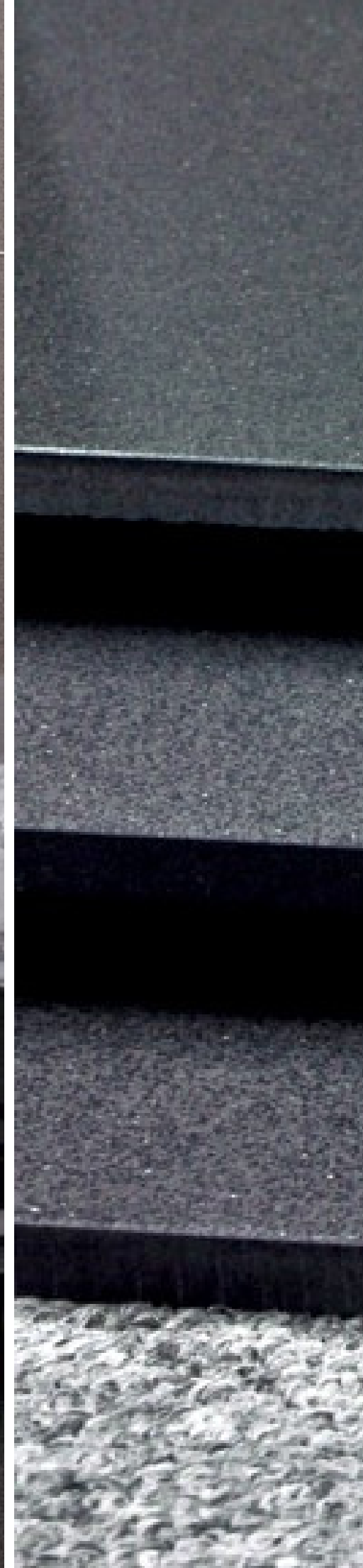
SAND COFFEE CRUDE

HOMOGENEOUS

SAND NERO

PAVEMENT: SAND NERO
MATT & SAND NERO CURD

CERAMIQUE
Land of Great Ceramic & Tiles



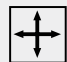

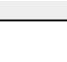





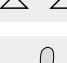






SAND NERO POLISHE
D

SAND NERO MATT

SAND NERO CRUDE
E

HOMOGENEOUS

Specification

			Nanogress Specification		
Test Description	Standard Test Method	International Standard ISO 13006:1998 (E)	Polished (Rectified)	Unpolished (Unrectified)	
 Length & Width	BS EN ISO 10545-2	+/- 0.6%	+/- 0.1%	+/- 0.3%	
 Thickness	BS EN ISO 10545-2	+/- 5.0%	+/- 5.0%	+/- 5.0%	
 Rectangular Squareness	BS EN ISO 10545-2	+/- 0.6%	+/- 0.2%	+/- 0.4%	
 Straightness of sides	BS EN ISO 10545-2	+/- 0.5%	+/- 0.2%	+/- 0.4%	
 Surface Flatness	BS EN ISO 10545-2	+/- 0.5%	+/- 0.5%	+/- 0.4%	
 Water Absorption	BS EN ISO 10545-3	<=0.5%	<=0.05%	<=0.05%	
 Modulus of Rupture : N/mm ²	BS EN ISO 10545-4	>= 35	>= 45	>= 50	
 Breaking Strength	BS EN ISO 10545-4	>= 1300 N	>= 1500 N	>= 1600 N	
 Resistance to deep Abrasion	BS EN ISO 10545-6	<=175/mm ³	<=150/mm ³	<=150/mm ³	
 Linear Thermal Expansion	BS EN ISO 10545-8	<=9 X 10 ⁻⁶ oK ⁻¹	<=7 X 10 ⁻⁶ oK ⁻¹	<=7 X 10 ⁻⁶ oK ⁻¹	
 Thermal Shock Resistance	BS EN ISO 10545-9	No visible defect	No visible defect	No visible defect	
 Frost Resistance	BS EN ISO 10545-12	No visible damage	No visible damage	No visible damage	
 Resistance to chemicals	BS EN ISO 10545-13	No visible effect	No visible effect	No visible effect	
 Resistance to Stains	BS EN ISO 10545-14	Manufacturer to state class	Stain removed Min. class 2	Stain removed Min. class 2	
 Color Resistance to UV light	DIN 51094	No change in color	No change in color	No change in color	

Main informations on the technical requirements of floor tiles

The aesthetic quality of ceramic tile is obviously the most important criterion when choosing a line of Nanogress tiles, but often it is not enough. We can offer you an enormous range of tiles with diversified technical characteristics to provide the perfect solution for any application and to meet all your requirements. Tiles are inherently resistant to various kinds of stress. Nonetheless, the most suitable tiling for the type of surface must be chosen according to a few simple technical guidelines. The first aspect that must be taken into consideration is the position of the tile, which may be outdoors or for use solely inside a house. Likewise, a tile may be intended for use solely as a wall covering rather than for use on a floor and therefore not designed to withstand the weight of furniture or the shock and wear of foot traffic. For more clearness, each product in this catalogue is accompanied by a symbol recommending one or more specific applications.

As principais informações sobre os requisitos técnicos para piso frio

O carácter estético da cerâmica é sem dúvida o critério mais importante para fazer uma preferência contra uma linha de azulejos oor Garfl, mas muitas vezes não é suficiente. Nós oferecemos uma grande variedade de peças com especificações diferentes, para melhor se adequar a cada uso específico, e para satisfazer as suas necessidades. O azulejo é, em si, um material altamente resistente a vários tipos de estresse. Mas você deve ainda escolher o melhor tipo de superfície a ser revestida de azulejos, seguindo algumas instruções simples. A primeira distinção a que a atenção ao posicionamento do azulejo, que pode ser usado somente de fora ou de dentro de uma casa, ou pode ser concebido para ser colocado apenas na parede como um revestimento, em vez de no chão, e depois estudou para ser sujeita-se ao peso dos móveis, choques e desgaste devido ao tráfego de pessoas. Para maior clareza, neste catálogo, cada produto será acompanhado por um símbolo que se uma ou mais utilizações específicas.

Las informaciones principales acerca de los requisitos técnicos de los pavimentos revestidos con azulejos

El carácter estético de la cerámica es obviamente el criterio principal, probablemente el más importante, a la hora de decidirse por una línea de azulejos Nanogress; pero a menudo no es suficiente. Ponemos a su disposición una amplia gama de azulejos de diferentes características técnicas, que se adaptan para lo mejor a cada uso específico y que responden a todas sus necesidades. El azulejo es, por sí mismo, un material muy resistente a los diferentes tipos de estímulos. Pero debe escogerse el azulejo más adecuado para el tipo de superficie que debe revestirse, siguiendo algunas sencillas indicaciones técnicas. La primera consideración a la que debemos prestar atención está relacionada con la colocación del azulejo que puede estar estudiado para el exterior o el interior de la vivienda, o bien estar diseñado para colocarse sólo en la pared como revestimiento más que como pavimento, y por lo tanto, para ser sometido al peso de los muebles, a los golpes y al desgaste producido por el tráfico. Para mayor claridad, en este catálogo cada producto se acompañará por un símbolo que aconseja uno o más usos específicos del producto.



Floor tile
Pavimento
Piso
Напольная
плитка



Frost resistant
Resistência ao
gelo Resistencia
al hielo
Морозостойкий



High resistance
Alta resistência
Alta resistencia
Высокое
сопротивление



Thermal shock resistant
Resistencia a las variaciones
térmicas Resistência ao choque
térmico Тепловой удар
упорный



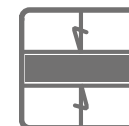
Class of resistance to surface
abrasion (where indicated)
Tipo de superficie cial
resistência à abrasão (onde
indicado)
Clase de resistencia a la
abrasión superficial (cuando
indicado)
Класс устойчивости к
истиранию поверхности (где
указано)



Class of resistance to surface
abrasion Tipo de resistência à
abrasão superficial social
Clase de resistencia a la abrasión
superficial
Класс устойчивости к
истиранию поверхности



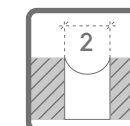
Slip resistance
Resistência ao
deslizamento Resistencia
al deslizamiento
Сопротивление
скольжению



Increased thickness
Thicker
Espesor aumentado
Толщина
расширяющий



Rectified
Retificado
Rectificado
Выпрямлен
ный



Suggested laying with joint
Recomendado colocação com
selo Colocación aconsejada con
junta Recomendается укладка
с совместным



Products with non-modular pieces which have to be laid diagonally
Produtos com peças modulares, não coloca em diagonal
Productos con piezas non modulares para posa en diagonal
Продукты с не модульное частей, которые должны быть
заложены по диагонали